

Eastern Metal  
**USA-SIGN**® **New Rigid Roll-Up™ Sign**

New pocket design uses heavier cross-braces to solve legibility problems.



Rigid Roll-Up™ Sign  
Untensioned (No Wind)

- Roll-Up Sign Convenience
- Rigid Sign Performance
- Superior Sign "Target Value"
- Enhanced Fixtures,
  - Extend Product Life
- Compatible with Compact™ and Interstate™ Stands with Masts.
- Premium Retro-Reflective materials used.
- A wide variety of 48" Signs.
  - diamonds, rectangles and squares available
- NCHRP-350 Approved on Accepted Eastern Metal/USA-SIGN® Sign Stands

**Day View:** Equally Tensioned to simulate Wind and Traffic Gusts



**Night View:** Equally Tensioned to simulate Wind and Traffic Gusts



Pictured Roll-up signs are equally tensioned at 12 lbs. to simulate real on-road winds and traffic created gusts.

**Rigid Roll-Up™**

# New Rigid Roll-Up Sign™

All standard 48" diamond shaped Rigid Roll-Up Signs are factory assembled and ready-to-use. Individual sign parts do not have to be ordered separately or reassembled for each use.

1-1/4 x 3/8 x 64-1/2

Vertical cross-brace permanently riveted to back of sign.

1-1/4 x 5/16 x 64-1/2

Horizontal cross-brace center riveted to vertical cross-brace with 3 washers for smooth rotation.

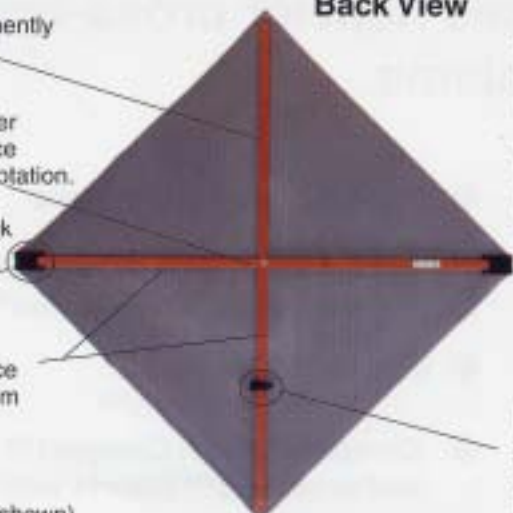
Lock-Pocket™ riveted to back of sign with (4) rivets and clear template on front.

Premium quality extruded orange fiberglass cross-brace (also called battens) free from burrs and fiberglass fibers.

Optional 3 Flag Holder (not shown) accepts standard 3/4" wood dowel flags. Add - 3FH to sign code. 3FH is riveted to the top of vertical cross-brace.

Lock-Pocket™ riveted to back of sign with four rivets and clear .060 lexan template on front of sign

Back View



**Step 1.** Turn horizontal cross-brace around to match the Lock-Pocket™.

**Step 2.** Open Lock-Pocket™, Insert cross-brace and close Lock-Pocket™. (See below)

**Step 3.** Repeat with opposite Lock-Pocket™.

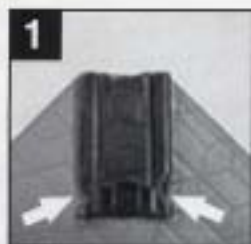
Heavy D-Ring hook and loop stabilizer strip riveted to vertical cross-brace for wrapping around stand mast.

Front View

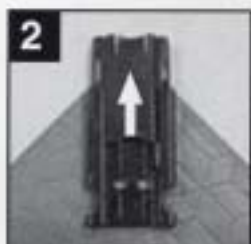


1" diameter clear .060 lexan washer used to rivet sign to cross-brace, prevents sign from pulling through. (Clear washers do not rust or obstruct legend).

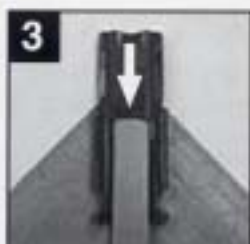
Optional Overlay Panel (OL) with hook and loop strips attaches to (or snaps) to corresponding strips (or snaps) sewn to sign face.



**Step 1.**  
 Open Lock-Pocket™  
 Squeeze side tabs of sleeve in.



**Step 2.**  
 Push sleeve of Lock-Pocket™ up to Open. Insert horizontal cross-brace



**Step 3.**  
 Slide cross-brace into position in Lock-Pocket™, Slide sleeve down locking into position securing cross-brace.



**Assembly Complete**

You're all done!  
 The sign is ready to use.

### Product Code Examples

R/48-SBR - Superbrite Fluorescent Orange  
 R/48-MFR - Marathon Fluorescent Orange  
 R/48-DGFR - Diamond Grade Fluorescent Orange

Wide variety of signs available

### Authorized Distributor

Rigid Roll-Up™